



End of Year Multi-Party Farm Equipment AUCTION

TIMED ONLINE



Equipment is located at multiple locations. See each item for location.
Opens: Friday, December 21 / Closes: Friday, December 28, 2018 at 1PM



TRACK TRACTOR
2015 John Deere 8370RT, 1,210 hrs., IVT, Premium Commandview cab II, 6 hyd., 60 GPM, 3pt., leather, 10" color touch display, dual beam radar, premium radio XM satellite, refrigerator, premium LED light package, cold weather package, large fuel water separator, aux. hyd. connect, 4 idler weights, Fast Tanks 1000 gal., Dura 6500 18 S/N 1RW8370RAFD914697 - Chris Swanson, 712-229-5947, Linn Grove, IA



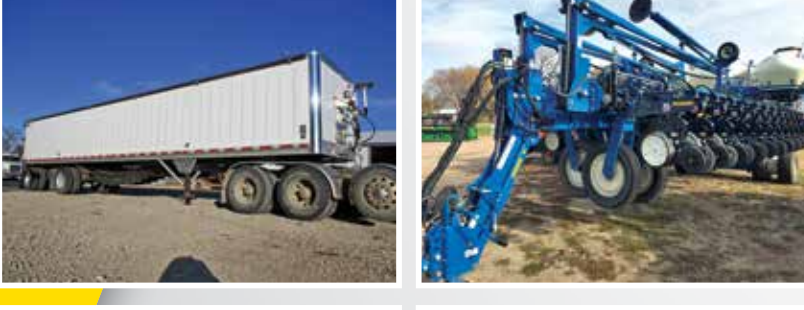
4WD TRACTORS
2017 John Deere 9370R, 314 hrs., powershift, 18F/6R, leather, active seat, buddy seat, 5 hyd., 59 GPM, Cat 4 drawbar, Lg. 1000 PTO, autotrac ready, radar, diff lock, LED lights, elec. mirrors, AM/FM radio w/ XM, 2130lb rear weights, less display & receiver, local trade, 1 owner, 800/70R38 duals, S/N 1RW9370RTHP054653 - C & B Equipment, Dustin Ricklefs, 712-371-3701, Parkston, SD
2012 John Deere 9510R, 1,605 hrs., powershift, 18F/6R, active seat, buddy seat, 5 hyd., 48 GPM, Cat 5 draw bar, auto trac plug & play, diff. lock, 1400# rear inner weights, 20 suitcase weights between axles, Bernau rock box w/ 8 suitcase weights, premium HID light package, manual mirrors, AM/FM radio, HD frame w/ tapered roller bearing gudgeon, grease able steering pins, front axle reinforcement, rear axle support, JD 2630 & Starfire 3000 included, Goodyear 800/70R38 duals, S/N 1RW9510RVCP004360 - C & B Equipment, Dustin Ricklefs, 712-371-3701, Edgerton, MN



MFWD TRACTORS
2016 John Deere 6110M, 67 hrs., MFWD, Autoquad Plus, 24F/24R, standard cab, 3 hyd., 30 GPM, 3 pt., 540/1000 PTO, 3 function loader ready, left hand reverser, Greenstar ready, pivoting front fenders, rear fender extensions, 100.6" rear axle, HD rear wheel brakes, manual mirrors, AM/FM radio, cab suspension, glass roof, cold start package II, beacon light, HD PTO, rear hitch control LH & RH, 480/70R38 rears, 480/70R24 fronts, S/N 1L06110MLGK870576 - C & B Equipment, Dustin Ricklefs, 712-371-3701, Worthington, MN
2015 John Deere 6105D, 190 hrs., MFWD, 12/12 shuttle trans., open station, 3 hyd., 3 pt., 540 PTO, sells w/ JD H310 3 function loader, joystick, 18.4-34 rears, 12.4-24 fronts S/N 1P06105DCF0061138 C & B Equipment, Dustin Ricklefs, 712-371-3701, Ida Grove, IA
2014 John Deere 7230R, 593 hrs., MFWD, CommandQuad, 20 spd., 4 hyd., 59 GPM, 3pt., 1000 PTO, Premium CommandView II with command arm, 7" color touch display, dual beam radar, deluxe radio package, 118" axle, cast wheels/ single taper hub, working light package, front fenders, cold weather package, aux. hyd. connect, 20 front suitcase weights, 1pr 165 & 1 pr. 450 rear inside weights, Firestone 480/80R46 duals, 38085R34 fronts, S/N 1RW7230REDC015725 - Noteboom, Dan Noteboom, 605-661-1283, Corsica, SD
2008 John Deere 8430, 5,735 hrs., MFWD, powershift, 4 hyd., 85 CC pump, 3pt. quick hitch, 1000 PTO, ILS, active seat, buddy seat, deluxe comfort package, auto guidance ready, Xenon HID lights, AM/FM radio, dual beam radar, cold weather package, 118.5" rear axle HD hubs, front fenders, (2) 1400lb inner rear wheel weights, 480/80R50 rear duals, 380/80R38 front duals, S/N RW8430P025335 - Jerry Groth, 712-369-0339, Battle Creek, IA



CORN HEADS
2014 John Deere 612C Stalkmaster, chopping corn head, 12x30", single point hook-ups, stubble lights, Contour Master sensors, Autotrac rowsense, knife rolls, hyd. deck plates, PTO telescoping drives (50/60/70/S Series), outer gathering extensions, poly row dividers, approx. 1,700 acres on unit, S/N 1H00612CEEC765976 - C & B Equipment, Dustin Ricklefs, 712-371-3701, Worthington, MN
2011 John Deere 608C, corn head, 8x30", S/N 1H0608CXEB0740773 - Jerry Groth, 712-369-0339, Battle Creek, IA
2008 John Deere 608C, corn head, 8x30", HHS, knife rolls, hyd. deck plates - Dylan Bettin, 712-830-2933, Odebolt, IA



PLATFORM
2008 John Deere 630F, flex head, 30", full fingered, S/N H00630F726324 - Roger Groth, 712-369-1238, Ida Grove, IA



HEAD TRAILER
2015 MD, head trailer, 30", 9.5L-15FI - Roger Groth, 712-369-1238, Ida Grove, IA

Complete details, photos, equipment locations, and additional items online.

COMBINES
2014 John Deere S690, 1,442 sep/1,992 eng hrs., PRWD, Contour-Master, 2630 display, Pro drive, Command touch, Maurer grain ext., Powercast tailboard, 76x50 fronts, 28L-26 rears, S/N 1H0S690STD0765240 - Chris Swanson, 712-229-5947, Linn Grove, IA
2010 John Deere 9770 STS, 1,687 sep/2,241 eng hrs., 2wd, premier cab, Contour-Master, hi capacity lift cyl, custom cutter ext wear sep., general purpose chaffer, 22.5" hi capacity unload auger, spreader, fine cut chopper, HD final drive, adj. rear axle, HD spindle, remote heated mirrors, sidehill cleaning shoe package, Firestone 520/85R42 duals, 600/65R28 rears, S/N 1H09970SLA736911 - Noteboom, Dan Noteboom, 605-661-1283, Corsica, SD
2007 John Deere 9760 STS, 1,739 sep./2,524 eng hrs., 2wd, Contour-Master, premier cab, CM hi torque variable spd., deluxe header control w/ HHS, guidance ready, touchset concave adjust., round bar concave ext wear, deep tooth chaffer, 22.5" hi capacity auger, stalk chopper, spreader, HD final drive, adj. rear axle, HD spindle, 520/85R42 duals, 28L-26 rears, S/N H09760S721544 - Roger Groth, 712-369-1238, Ida Grove, IA

SPRAYERS
1996 John Deere 4700, 3,050 hrs, self-propelled sprayer, 60' boom, 800 gallon ploy tank, auto-steer ready, automatic shut-offs, JD 2600 monitor, no receiver, 380/85R34 tires, S/N N04700X000128 (new rear wheel motors, parking brake doesn't work) - Jeff Reinking: 712-253-8891, Kingsley, IA
Demco, 30' boom, 500 gal tank, 12.5L15 tires - Jerry Ebert, 712-253-2846, Washta, IA

VERTICAL TILLAGE & RIPPER
2014 Horsch/Anderson RT370 Joker, 35', front blades 18 1/2", 19 1/2" rears S/N S100370 - Loren Movall, 712-660-0007, Storm Lake, IA
2005 John Deere 512, disc ripper, 7 shank - Jeff Reinking, 712-253-8891, Kingsley, IA

DISCS
2015 John Deere 2623, disc, 337", 9" spacing, C-spring knockout scrapers, pool knockout scrapers, single pt depth control, wing stabilizer wheels, tandems across, S/N 1N02623XPE0760032 - Jerrod Reimer, 712-269-1397, Charter Oak, IA
2013 Sunflower 1435, disc, 36', front blades 23 1/4", rear 24" - Loren Movall, 712-660-0007, Storm Lake, IA
2008 Case-IH RMX340, disc, 35', 3 section tandem disc, New 22" blades, 9" spacing, hyd. fore/aff., single pt. depth, walking tandems across, rigid gang standards, 3 bar harrow, S/N JFH0033206 - C & B Equipment, Dustin Ricklefs, 712-371-3701, Lake Park, IA
2000 Sunflower 1433, disc, 35', tandem disc, 21" blade, 9" spacing, Summers M104 3 bar harrow, rear hitch, hyd. fore/ aft., hyd. wing control, single pt. depth, walking tandems across, rigid scrapers, C-flex bearing standards, cone blades, 1 owner, S/N 01433J20000327 - C & B Equipment, Dustin Ricklefs, 712-371-3701, Miller, SD

WHEEL LOADER
2015 John Deere 324K, 3,297 hrs., wheel loader, diesel, CAH, two spd. transmission, joystick, power quick tach., skidsteer plate, 2.1 yd. bucket, standard hyd., aux. hyd., standard light package, cold start package, 400/70R20 tires, S/N 1LU324KXAZB038213 - C & B Equipment, Dustin Ricklefs, Luverne, MN

PLANTER & DRILL
2013 Kinze 3700, CCS planter, 24x30", finger pickup, mechanical drive, front fold, flex frame, draw bar hitch, 4 downforce springs unit, no row cleaners, chain unit drives, 15" steel do scrapers, rubber closing wheels, con & bean meters, radial bean meters, Isobus ready planter, translucent seed tubes, markers, Digi Star scale, one owner, S/N 751376 - C & B Equipment, Dustin Ricklefs, 712-371-3701, Freeman, SD
1985 Case-IH 5100, drill, 15', 7" spacing, grass seed attachment, all rebuilt with new openers - Thad Bagenstos, 712-210-5317, Holstein, IA

BALERS
2014 Vermeer 605 Super M, net wrap, power wind mag, 5,000 bales, sells with 3 PTO shafts large 1000, small 1000, small 540 21.5L - 16.1 SL tires - Kevin Swenson, 712-574-3093, Moorhead, IA
2013 John Deere 569, 5x6 bale, net wrap, 1000 PTO, Megawide pickup, push bar, hyd. pickup, variable core valve, right & left gauge wheels, Bale Trak Pro monitor, approx. 14,000 bales, 21.5L-16.1 flotation tires, S/N IE00569XEDD392009 - C & B Equipment, Dustin Ricklefs, 712-371-3701, Tracy, MN
New Holland 68, small square baler - Travis Youngren, 712-369-1108

BATWING
2013 Woods BW240HD, 20', Sm 1000 / Lg 1000PTO, 6 large aircraft tires, S/N 1239399 - Tim Buell, 712-830-2569, Galva, IA

SEMI TRUCK
2007 Freightliner Classic, sleeper, 658,000 miles, 450 HP Mercedes, 13 speed, 358 rear end, new brakes, 285/75R24.5 tires, 8 new virgin drive tires, aluminum wheels - Tal Bettin, 712-830-2706, Odebolt, IA

BELT TRAILER
2014 Wilson DWBT-650, belt trailer, 44'x78"x96", spread axle, electric roll tarp, Bridgestone 726 EL 11R22.5 tires, VIN 1W14442A3E2262146 - Chris Swanson, 712-229-5947, Linn Grove, IA

GRAIN CARTS & WAGONS
2016 Demco 1050, grain cart, scale, tarp, 900/60R32 tires, S/N G24767 - Chris Swanson, 712-229-5947, Linn Grove, IA
John Deere 650, grain cart, tandem axle, 1000 PTO, 49 x 17 fronts, 425/65R22.5 rears - Mike Bettin, 712-830-0280, Odebolt, IA
Parker 405 gravity wagon, brakes, lights, 425/165R22 tires - Keith Leonard, 712-210-1190, Holstein, IA
(2) Westendorf, gravity wagon, 350 bu., lights 10.00-20F tires - Kevin Swenson, 712-574-3093, Moorhead, IA
(2) J&M, gravity wagon, 325 bu., lights - Kevin Swenson, 712-574-3093, Moorhead, IA

FINISHER
2015 Krause 5635, field finisher, 30', rolling basket with harrow, only 1000 acres - Quirk Farms, 712-830-9859, Wall Lake, IA

FIELD CULTIVATORS
2010 John Deere 2210, field cultivator, 61 1/2', Accudepth, extenders w/ ban tine tooth harrow, rolling basket w/ harrow, S/N N02210X010175 - Bill Wolleson, 561-302-4748, Lake View, IA
2007 John Deere 2210, field cultivator, 64', 5 section, Accudepth, gauge wheels, tandems across, 4 bar tine harrow, S/N N02210X004155 - Chris Swanson, 712-229-5947, Linn Grove, IA
2005 John Deere 2210, field cultivator, 35 1/2', 6" spacing, 200 lb shanks, single point depth control, wing stabilizer wheels, extenders, 4 bar tine harrow - Tim Dahms, 712-880-1122

Case-IH 4800, field cultivator, 25' - Joel Vogt, 712-261-0813

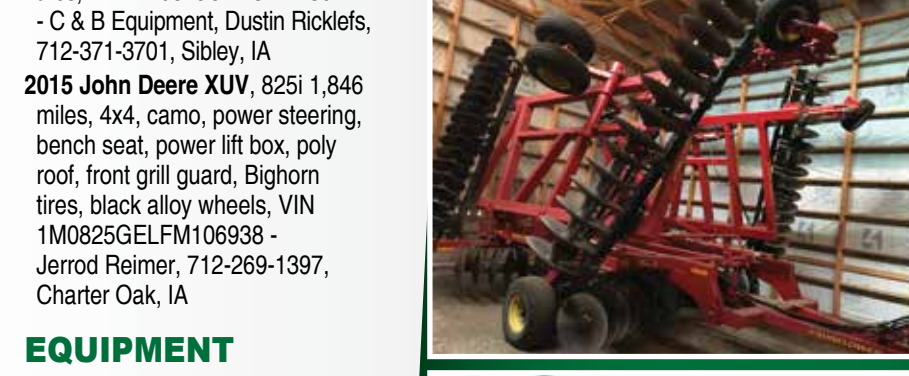
Auctioneer's Note: Please join us for this End of Year Online Only Auction from several local farmers and dealers. Please note the locations and owners names on each item. Sales tax applies, exemption forms available. \$35 pc per titled item. Preview of the equipment will be by appointment only. All items to be removed within 14 days.

AUGER
Mayrath, swing hopper, 70"x10", hanger bearings, S/N 912751 - Mike Yender, 712-660-1681, Early, IA

UTV's
2016 John Deere 825i, 730 hrs./4,810 miles, 4x4, 825 CC, air cooled, gas, Gator, variable speed drive, electric bed lift, poly box liner, front lights, ROPS, poly top, bench seat, rubber floor mats, Knobby tires, VIN 1M0825GELGM118041 - C & B Equipment, Dustin Ricklefs, 712-371-3701, Sibley, IA
2015 John Deere XUV, 825i 1,846 miles, 4x4, camo, power steering, bench seat, power lift box, poly roof, front grill guard, Bighorn tires, black alloy wheels, VIN 1M0825GELFM106938 - Jerrod Reimer, 712-269-1397, Charter Oak, IA

EQUIPMENT
Unverferth 500, 3pt. caddy, category 4 hitch, 13,500 # lift capacity, turnbuckle leveling, category 3 hitch, 6" x 6" steel 12.5L-15 8 ply tires - Andy Blenner, 712-660-3204, Schaller, IA
John Deere 200, stack wagon 16.5 L- 16.1 tires - Quirk Farms, 712-830-9859, Wall Lake, IA
Hawkins, corn reel 8x30", used one season - Jeff Reinking, 712-253-8891, Kingsley, IA
Maurer, tip up grain tank extension - Matt Raasch, 712-830-5647
John Deere, loader bucket, 8', 5 tine grapple - C & B Equipment, Dustin Ricklefs, 712-371-3701, Roscoe, SD

2014 Wilson DWBT-650, belt trailer, 44'x78"x96", spread axle, electric roll tarp, Bridgestone 726 EL 11R22.5 tires, VIN 1W14442A3E2262146 - Chris Swanson, 712-229-5947, Linn Grove, IA

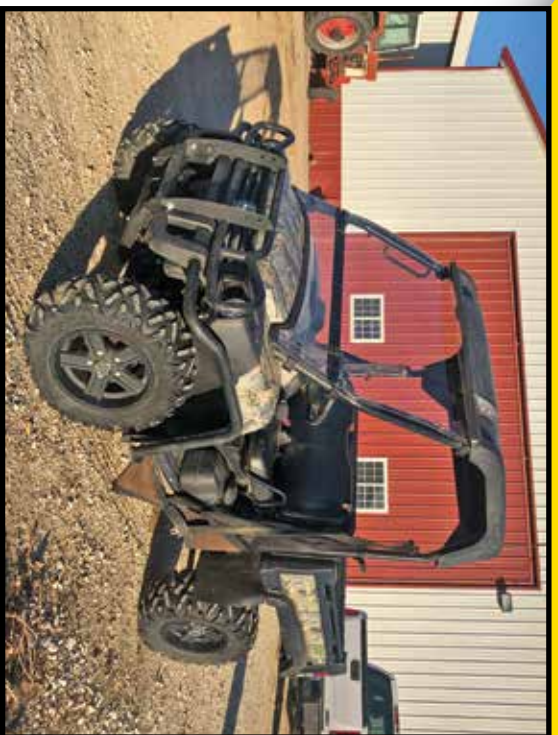


SteffesGroup.com

For details contact auction manager DeWayne Ricklefs of Steffes Group, 515.432.6000 or by cell, 712.830.9105



Steffes Group, Inc., 2245 East Bluegrass, Mt. Pleasant, IA 52641 | 515.432.6000



Steffes Group, Inc.
2245 East Bluegrass Rd
Mt. Pleasant, IA 52641

RESORTED
FIRST CLASS
US POSTAGE
PAID
Permit #315
FARGO, ND

UPCOMING STEFFES GROUP AUCTIONS



TIMED ONLINE FARM RETIREMENT AUCTION

Closes: Thursday, December 27, 2018 at 10AM
Equipment located: Knoxville, IA
MPWD TRACTOR, COMBINE, HEADS & TRAILERS, TILLAGE, PLANTER, GRAIN CART, & MORE
Rick & Tamra Stevenson - 641.218.6129



TIMED ONLINE FARM RETIREMENT AUCTION

Closes: Thursday, December 27, 2018 at 1PM
Equipment located: Grand Junction, IA
MPWD TRACTOR, COMBINE, HEADS & TRAILERS, TILLAGE, PLANTER, STRAYER, SEMI & MORE
Rowles Angus, Inc. Roger Rowles - 515.370.0047



TIMED ONLINE MULTI PARTY FARM EQUIP.

Closes: Friday, December 28, 2018 at 1PM
Equipment located in multiple locations
TRACTOR, 4WD & MPWD TRACTORS, COMBINES, WHEEL LOADER, SPRAYERS, TILLAGE & MORE
Rowles Angus, Inc. Roger Rowles - 515.370.0047



SteffesGroup.com

VIEW ALL AUCTIONS AT **SteffesGroup.com**

Mt. Pleasant, IA | Ames, IA | Sioux Falls, SD | West Fargo, ND | Grand Forks, ND | Litchfield, MN | Lexington, NE
319.385.2000 | 515.432.6000 | 712.477.2144 | 701.237.9173 | 701.203.8400 | 320.693.9371 | 308.217.4508